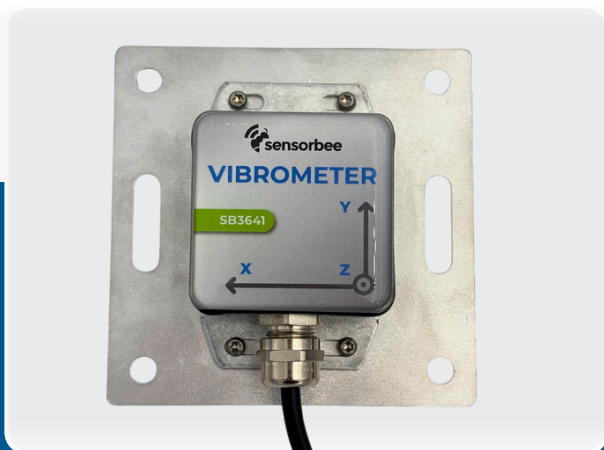


Sensorbee Vibration Sensor

The SB3641 is a durable triaxial vibration sensor for monitoring construction, blasting, and traffic vibrations. It connects seamlessly with the Sensorbee Pro2 base via Modbus RTU and is built for long-term use in harsh environments with its IP67 weatherproof housing. The SB3641 provides real-time data on Peak Particle Velocity (PPV), Peak Component Particle Velocity (PCPV), and frequency spectrum, offering precise insights for infrastructure and environmental monitoring.



SB3641 - Sensorbee Vibration sensor



Velocity range:

± 50 mm/s



Operating Temperature:

-30 to +60 °C



Power:

5 to 24VDC



RMS noise:

0.05 mm/s



Temperature Sensor:

-20 to 50 °C: ± 0.1 °C



Dimensions:

100 x 100 x 30 mm



Interface:

Sensorbee extension port (M8)



Operating Humidity:

0 to 99 %RH



Weight:

350 gram



Waterproof Rating:

IP67



Regulatory Compliance:

CE



Power:

10 mW



Bandwidth:

1 to 100 Hz. Signals are sampled at 4096 Hz.



Housing:

Aluminium with 5 mm plate.
Dimensions: 100 x 100 x 30 mm.



Cable length:

2.5m



Connectivity:

Compatible with Sensorbee Air quality units, using the M8 extension port (Modbus RTU)



Compliance Standards:

BS 7385-1
BS 6472-1



Output Data:

PPV,
PCPV (X, Y, Z),
Peak Frequency (X, Y, Z),
PPV FFT spectrum peak amplitude,
Temperature



Data Visualization:

The Sensorbee Cloud Platform displays sensor data in real-time and historical views, offering detailed visualizations such as PPV graphs, PCPV/frequency plots, and FFT analysis.